


*Clearance*

**Sale**



Unfinished  
European  
White Oak AB  
Grade

## AVAILABLE IN STOCK USA

**2300 SF Engineered Rustic Mix AB 18mm thick/ 6mm top layer x 7" wide x Random Lengths**

**Discounted Price \$ \$10.00 per SF plus Freight from FL**



Unfinished  
European  
White Oak ABC  
Grade

**AVAILABLE IN STOCK USA**

**700 SF Engineered Rustic Mix ABC 5/8" 4mm top layer  
x 7" wide x Random Lengths**

**Discounted Price \$ \$7.50 per SF plus Freight from FL**



The image shows several long, narrow wooden planks of scorched timber. The wood has a warm, golden-brown hue with prominent, wavy grain patterns and several dark, irregular knots. The planks are laid out in a parallel fashion, showing their natural texture and imperfections. A white text box is overlaid on the left side of the image, providing product details.

Unfinished  
Scorched  
Timber

**AVAILABLE IN STOCK IN EUROPE**

5941 SF Available Stock at our mills in Europe  
Engineered Rustic Grade 5/8" x 8.66" wide x Random Lengths

3767 SF Available Stock in our mills in Europe  
Engineered Rustic Grade 5/8" x 7" wide x Random Lengths

Discounted Price \$ \$12.75 per SF plus Freight from FL

**LEAD TIME IS 4 WEEKS TO SHIP FROM EUROPE**  
Requires a sealer after installation.



## AVAILABLE IN STOCK IN EUROPE


Unfinished  
Prime Grade  
Herringbone

8000 SF Available Stock k at our mills in Europe  
Prime Grade Engineered 13mm (0.51") thick x 4.72" wide x  
23.62" long

Discounted Price \$ \$10.75 per SF plus Freight from FL

**LEAD TIME IS 4 WEEKS TO SHIP FROM EUROPE**  
**Requires sealer after installation.**





## Tudor Black

### AVAILABLE IN STOCK USA

177 SF Available Stock in our Florida warehouse

Solid  $\frac{3}{4}$ " x Random Widths x 9.5"

Discounted Price \$ \$15.00 per SF plus Freight from FL

Torched flooring, undulation expected, requires sealer after installation.

**AMAZING DEAL 50% DISCOUNT ORIGINAL  
PRICE \$30 PER SF**





## AVAILABLE IN STOCK USA

Stonewashed  
Natural White

155 SF Available Stock in our Florida warehouse

Rustic A Grade –Micro beveled

Engineered 3/4" x 9.64" x Random lengths

Discounted Price \$ \$10.00 per SF plus Freight from FL




Baked

## AVAILABLE IN STOCK USA

84 SF Available Stock in our Florida warehouse  
3 layer Engineered 5/8" x 7" x Random lengths  
Rustic A Grading, Square Edge  
Discounted Price \$ \$6.50 per SF plus Freight from FL







Stonewashed  
Weathered  
White

## AVAILABLE IN STOCK USA

158 SF Available Stock in our Florida warehouse

Engineered  $\frac{3}{4}$ " x 8.66" x Random Lengths

Discounted Price \$ \$10.00 per SF plus Freight from FL





Design Castle  
Sand

**AVAILABLE IN STOCK USA**

270 SF Available Stock in our Florida warehouse

Solid  $\frac{3}{4}$ " x 7" x Random Lengths

Discounted Price \$ \$9.50 per SF plus Freight from FL

**REQUIRES BONA TRAFFIC NATURAL MATTE FINISH**

**AFTER INSTALLTION**




Antique  
Distressed  
Classic

AVAILABLE IN STOCK USA

250 SF Available Stock in our Florida warehouse  
With Wax finish Solid 3/4" x 7" wide x random lengths  
Discount Price \$ \$9.00 per SF plus Freight from FL

271 SF Available Stock in our Florida warehouse  
No finish Engineered 3/4" x 7" wide x 5' long  
Discounted Price \$ \$8.00 per SF plus Freight from FL





Antique  
Distressed  
Nostalgic  
Herringbone

## AVAILABLE IN STOCK USA

175 SF Available Stock in our Florida warehouse

Solid  $\frac{3}{4}$ " x 4" x 24"

Requires sealer on site

Discounted Price \$ \$ 9.00 per SF plus Freight from FL





Tudor Nostalgic

**AVAILABLE IN STOCK USA**

169 SF Available Stock in our FL warehouse

Engineered 22mm x 7" wide x Random Lengths

Prefinished

Discounted Price \$ \$15.00 SF plus Freight from FL





**AVAILABLE IN STOCK USA**

140 SF Available Stock in our FL warehouse

Engineered 22mm x 4.72" x 25.59"

Prefinished

Discount Price \$ \$17.00 SF plus Freight from FL

Chevron  
Tudor Nostalgic



McKinney

## AVAILABLE IN STOCK USA

1045 SF Available Stock in our Florida warehouse  
Engineered Rustic Grade  $\frac{3}{4}$ " x 10.23" wide x 7.2'L  
Discounted Price \$ \$10.00 SF plus Freight from FL



## AVAILABLE IN STOCK USA

244 SF Available Stock in our Florida warehouse

Engineered 5/8" x 7" x 7' long

Rustic A Grading, Micro beveled

Discounted Price \$ \$5.00 per SF plus Freight from FL

UV Natural





Chambord  
Bordeaux

**SOLD OUT OF STOCK**

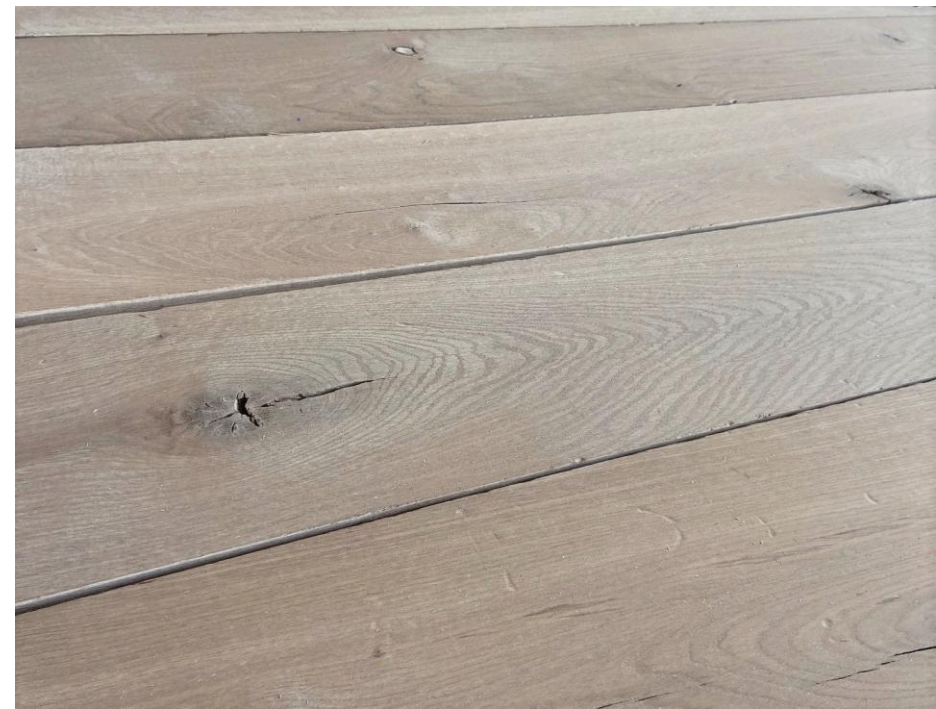
270 SF Available Stock in our Florida warehouse

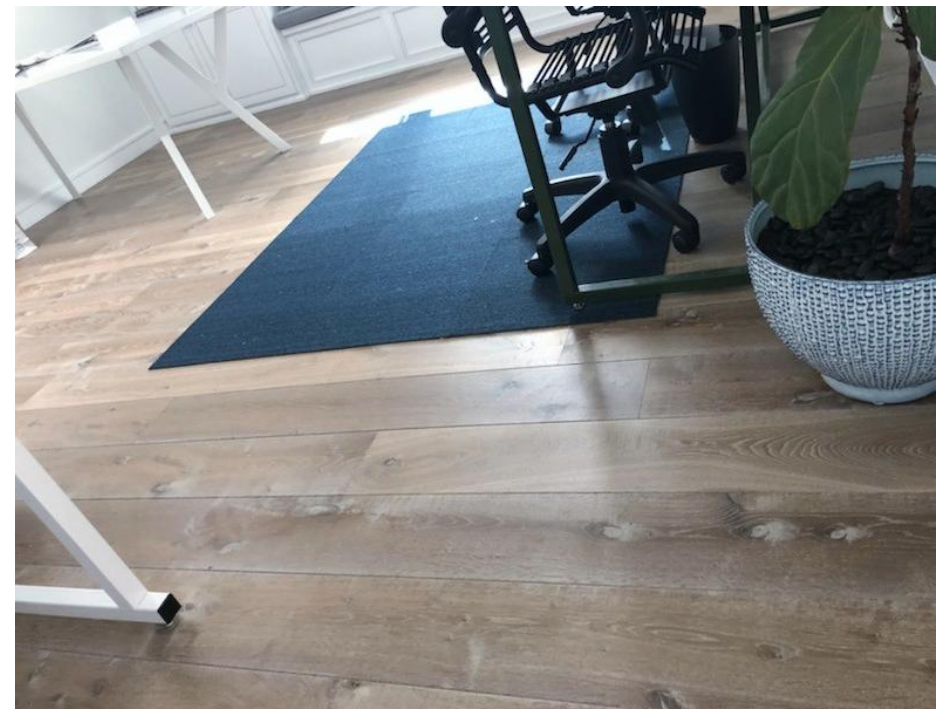
Solid  $\frac{3}{4}$ " x 7" x Random Lengths 3' -9'

Distressed bevel with OPEN knots and cracks.

Discount Price \$ 9.50 per SF plus Freight from FL

**REQUIRES BONA TRAFFIC NATURAL FINISH AFTER  
INSTALLTION**





Double Smoked  
Planed Chalk

**SOLD OUT OF STOCK**

785 SF Available Stock in our Florida warehouse

Engineered  $\frac{3}{4}$ " x 7.28" x Random Lengths 3' -9'

Discount Price \$ \$10.00 per SF plus Freight from FL



Stonewashed  
Limestone

**SOLD OUT OF STOCK**

380 SF Available Stock in our Florida warehouse

Solid  $\frac{3}{4}$ " x 7" x Random Lengths

Discounted Price \$ \$10.00 per SF plus Freight from FL



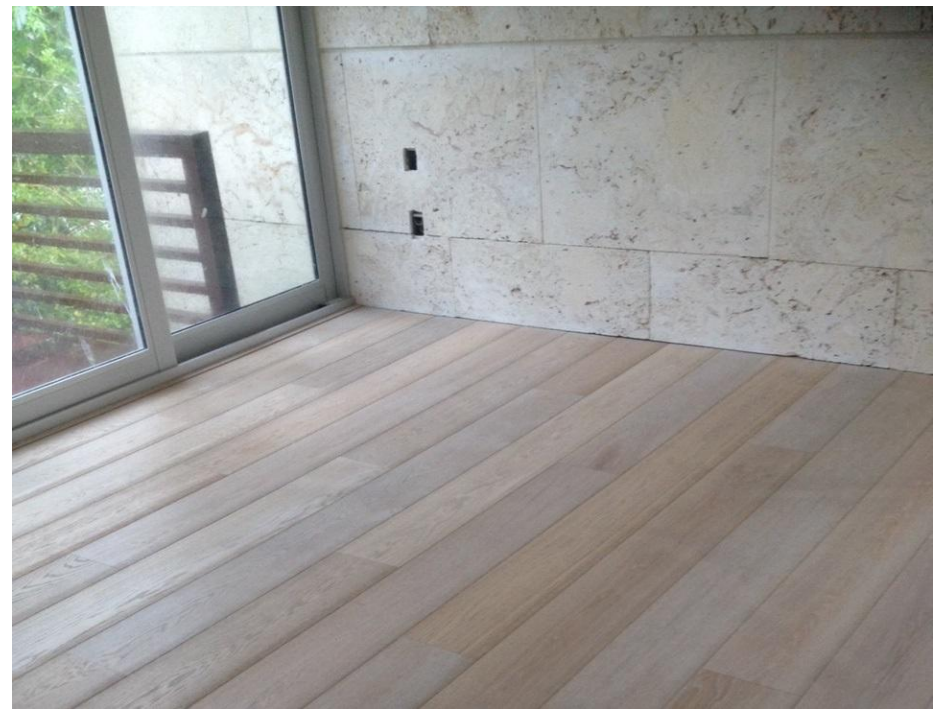
Design Castle  
White

**SOLD OUT OF STOCK**

600 SF Available Stock in our Florida warehouse

Engineered  $\frac{3}{4}$ " x 7" x Random Lengths

Discounted Price \$ \$9.00 per SF plus Freight from FL





Design Castle  
Brittany

**SOLD OUT OF STOCK**

1105 SF Available Stock in our Florida warehouse

Solid  $\frac{3}{4}$ " x 7" x Random Lengths 3' -9'

Distressed bevel with OPEN knots and cracks.

Discount Price \$ \$10.00 per SF plus Freight from FL

**REQUIRES BONA TRAFFIC NATURAL FINISH AFTER  
INSTALLTION**





Oak Amsterdam

**SOLD OUT OF STOCK**

1358 SF Available Stock in our Florida warehouse

Engineered 5/8" x 8.66" x Random lengths 5'-9'

Rustic A Grading, Square Edge

Discount Price \$ \$9.50 per SF plus Freight from FL



Antique  
Distressed  
Antique with  
Wax

## SOLD OUT OF STOCK

210 SF Available Stock in our Florida warehouse  
Engineered  $\frac{3}{4}$ " x 7" x random lengths  
Discount Price \$ \$12.00 per SF plus Freight from FL

90 SF Available Stock in our Florida warehouse  
Solid  $\frac{3}{4}$ " x 5.51", 7.87" and 10" wide x random lengths  
Discount Price \$ \$12.00 per SF plus Freight from FL





Cotton Mill  
Black Forest

**SOLD OUT OF STOCK**

0 SF Available Stock in our Florida warehouse  
Engineered 21mm x 13.38" wide x 12.79' long  
Discount Price \$ \$12.00 SF plus Freight from FL







Pale Grey

**SOLD OUT OF STOCK**

0 SF Available Stock in our Florida warehouse  
Engineered 5/8" x 7.48" x Random lengths 3'-9'  
Discount Price \$ \$9.00 per SF plus Freight from FL



Engineered  
Unfinished  
European White Oak

## **SOLD OUT OF STOCK**

0 SF Available Stock in our FL warehouse

Engineered Rustic Mix AB Grade 16mm x 8.66" x 4'-9"

Discount Price \$ \$7.00 per SF plus Freight from FL

## **SOLD OUT OF STOCK**

0 SF Available Stock in our FL warehouse

Engineered Prime Grade 16mm x 7" x 4'-9"

Discount Price \$ \$7.00 per SF plus Freight from FL



Antique  
Distressed  
Bordeaux

## SOLD OUT OF STOCK

- 0 SF Available Stock in our Florida warehouse  
Solid 3/4" x 7" x Random lengths 3'-9'
- Discount Price \$ \$10.00 per SF plus Freight from FL
- Requires sealer after installation



Cotton Mill  
Pale Grey

**SOLD OUT OF STOCK**

0 SF Available Stock in our Florida warehouse

Engineered 5/8" x 8.66" x 7' long

Rustic A Grading, Square Edge

Discount Price \$ \$5.00 per SF plus Freight from FL





## SOLD OUT OF STOCK

Solid Unfinished  
European White Oak

0 SF Available Stock in our FL warehouse  
Solid Prime Grade  $\frac{3}{4}$ " x 7" x 2' -9' with an average of 4' & 5'  
Discount Price \$ \$7.50 per SF plus Freight from FL



Versailles Panel  
Antique  
Distressed  
Antique

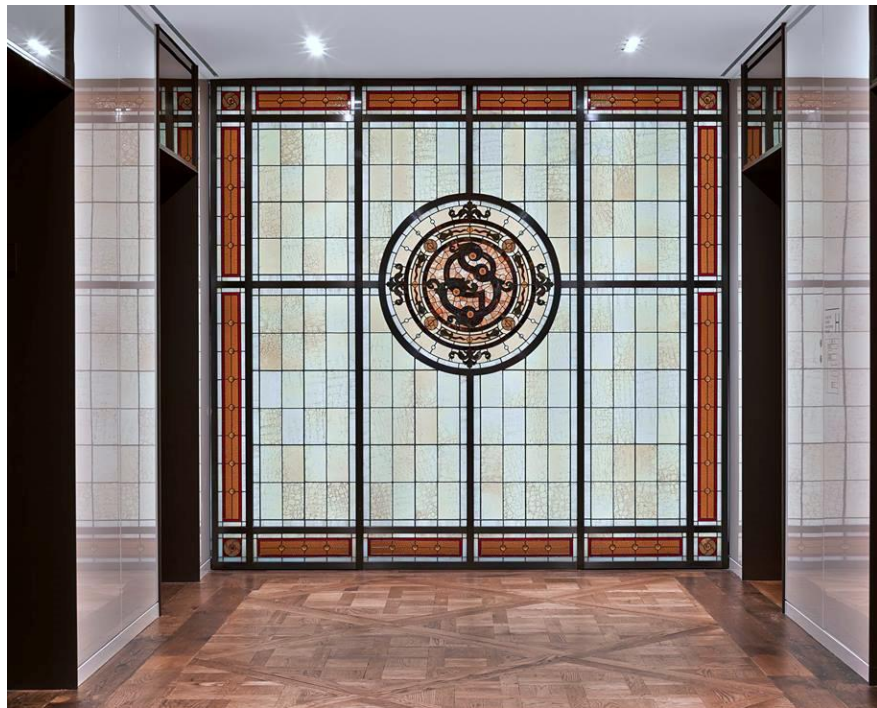
**SOLD OUT OF STOCK**

0 Panels Available Stock in our Florida warehouse

Solid  $\frac{3}{4}$ " x 40" x 40"

Discount Price \$ \$17.00 per SF plus Freight from FL

Requires sealer after installation





For more information, samples or to place an order, please contact:

US East Coast Account Executive

Alexa Marin

786.444.1543

[amarin@boischamois.com](mailto:amarin@boischamois.com)

US West Coast Account Executive

Jenna Robitaille

949-324-8447

[Jenna@boischamois.com](mailto:Jenna@boischamois.com)