

BOIS CHAMOIS  
VINTAGE HARDWOOD FLOORING

boischamois.com

800.823.0898



## ARCHITECTURE SERIES

The Architecture Series is available with both a beveled edge and no distressing, or with a broken edge and surface distressing providing a convincing, naturally worn appearance. Scarring and surface marking is produced without repetition. Edges are irregular and worn.

**Specifications** – European White Oak, ¾" by 6.25", 7", 7.75", 8.25" random length 3' to 9' with T & G sides and squared ends. This collection is totally pre-finished with a factory applied hard wax designed to reflect the styles found in Europe centuries ago and recreates the same time worn look that showcases the character and longevity of hardwood floor with natural changing grain patterns exemplifying true vintage artistic design.

The "Architecture Series" line can also be made in an "Engineered" floor; however this is a custom order.

The Architecture Series is available in the following colors:

- Castle Sand
- Design Castle Cognac
- Design Castle White
- Design Castle Grey
- Design Castle Nostalgic
- Beaulieu Castle Brittany
- Beaulieu Castle Nostalgic



## PARISIAN LINE

The Parisian Line consists of a refreshingly clean looking floor made from the finest European White Oak, hand crafted in Europe.

**Specifications** – European White Oak, ¾" by 6.3", 7", 7.9", 9 ½" random length 2' to 10' with T & G sides and squared ends. This collection is totally pre-finished with a factory applied hard wax designed to reflect the styles found in Europe centuries ago that showcases the character and longevity of hardwood floor with natural changing grain patterns exemplifying true vintage artistic design. Available in both a Solid and an Engineered with a generous 6mm wear layer.

The Parisian Line is available in the following colors:

- Alaskan Grey
- Paris Gris
- Weathered Oak



## ANTIQUE DISTRESSED

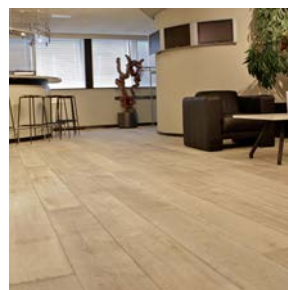
The Antique Distressed line is distressed to provide a convincing, naturally worn appearance. Scarring and surface marking is produced without repetition. Edges are irregular and worn.

**Specifications** – European White Oak, ¾" by 7", random length 3' to 9' with T & G sides and squared ends. Also available in widths from 5" to 10" which is a custom order.

The "Antique Distressed" line can also be made in an "Engineered" floor; however this is a custom order.

In the Antique Distressed line there are four basic colors:

- Classic: natural color no stain or finish
- Nostalgic: grey color
- Antique: golden brown color
- Bordeaux: dark brown color

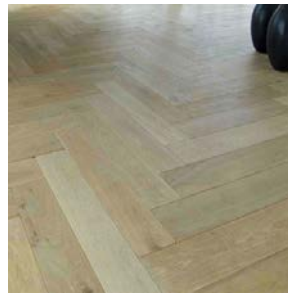


## CHEVRON/HERRING BONE – CUSTOM ORDER

Let Bois Chamois create an exclusive, luxury floor with the unique character of European White Oak from the Antique Distressed line.

Custom Patterns are available in the following designs:

- Chevron
- Herring Bone

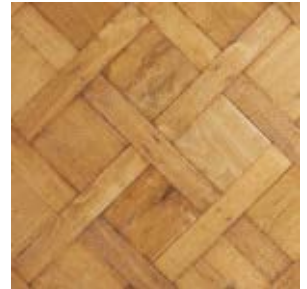


## PARQUET PANEL - CUSTOM ORDER

Let Bois Chamois create an exclusive, luxury floor with the unique character of European White Oak from the Antique Distressed line.

Custom Patterns are available in the following designs:

- Versailles



## STONEWASHED LINE – CUSTOM ORDER

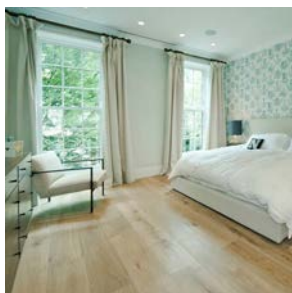
A complete range in exclusive European White Oak distressed flooring made by hand. The collection contains solid and engineered flooring. The pallet ranges from rich charcoal grays to limestone to white, the result – an antique, yet refreshingly clean – looking plank.

Totally pre-finished with European oil, which is suitable for both residential and commercial applications.

**Specifications** – European White Oak, 3/4" x 5 1/2", 7 1/4" or 9 1/2", random length 3' to 10' with T & G sides and matched ends. The engineered version comes in a very impressively crafted, heavy 3/4" thickness. The top wear layer is a generous 6mm of the Finest European White Oak.

In the Stonewashed range there are a variety of colors available:

- Stonewashed Double Smoked White Chatter Marks – Available in Solid and Engineered
- Stonewashed Double Smoked White – Available in Solid and Engineered
- Stonewashed Double Smoked Natural – Available in Solid and Engineered
- Stonewashed Double Smoked Black – Available in Solid and Engineered
- Stonewashed Deep Black – Engineered
- Weathered White – Engineered
- Limestone – Available in Solid or Engineered
- White – Available in Solid or Engineered
- Charcoal – Engineered
- Driftwood – Engineered
- Gray – Engineered



## SEASIDE COLLECTION

Seaside Collection – Consisting of a high quality Engineered floor that is constructed of marine grade ply backing. The top wear layer is a generous 4mm to 6mm of the Finest European White Oak which is totally pre-finished with factory applied European oil.

**Black to White Collection** • **Pro Strip** • **UV Line**

### BLACK TO WHITE

**Specifications** – Black to White Collection – European White Oak,  $\frac{3}{4}$ " x  $7\frac{1}{2}$ " x 6' with T & G sides and matched ends. This collection is totally pre-finished with a factory applied hard wax.

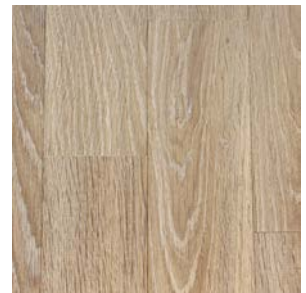
Available colors: Driftwood Black-to-White and Slate Gray Black-to-White.



### PRO STRIP

**Specifications** – Engineered European White Oak  $\frac{1}{2}$ " x 3  $\frac{1}{3}$ " with a 3mm wear layer x. This collection is totally pre-finished with a factory applied hard wax.

Available colors: Smoked White and Doubled Smoked White.

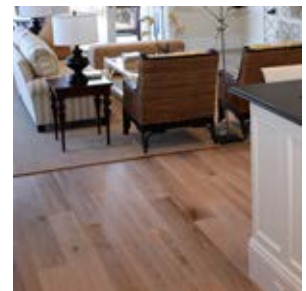


### UV LINE

UV line - A high quality Engineered floor that is constructed of marine grade ply backing, nine layers in total. The top wear layer is a generous 6mm of the Finest European White Oak which is totally pre-finished with factory applied European oil.

**Specifications** – European White Oak,  $\frac{3}{4}$ " x  $7\frac{1}{2}$ " x 6', with T & G sides and matched ends.

Available colors: Fumed Natural, White and Espresso.



## TUDOR - CUSTOM ORDER

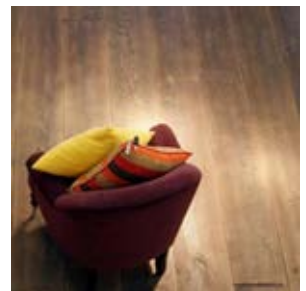
Let Bois Chamois take you back in time. The Tudor range is probably one of the most unique products on the market when you are searching for an authentic-looking antique floor.

The Tudor Oak is manufactured in the same way that it has been done for hundreds of years by using indirect heat of 1,000 degrees centigrade. This process changes the surface of every board giving each one its own unique look which cannot be duplicated by machine or by hand. As the surface has been treated with heat, it naturally hardens making a very dense and stable floor.

**Specifications** – European White Oak,  $\frac{3}{4}$ " x 8" to 11" x 3' – 10', random length, average length 7', with groove sides with spline and squared ends.

In the Tudor range there are four basic colors:

- Tudor Nostalgic : grayish color
- Tudor Black: rich black color
- Tudor Cognac: light brown with dark hues
- Tudor Antique: gold-brown color



## UNFINISHED EUROPEAN WHITE OAK

European White Oak represents 'old world' flooring, Long planks, wide widths, and all the natural characteristics of the lumber exhibited throughout each individual plank.

Bois Chamois carries the following lines: **Baked White Oak** • **French Roast** • **Mill Run**

### BAKED

Bois Chamois achieves the rich color tones and character of the Baked Flooring by Baking the wood at extreme temperatures which transforms the pale hues of the White Oak in to rich chocolate and blonde tones and breaking down the natural juices and acids which bleed throughout the entire boards resulting in a "One of a kind Flooring" that is truly unique in nature. The end result is similar in tones to Walnut and Wenge. The color hues are throughout, meaning that this material can be sanded multiple times and it will never lose its color and as the material has been treated with heat, it naturally hardens making a very dense and stable floor. The process of "Baking" the White Oak is unique, and environmentally-friendly.

**Specifications** – Solid European White Oak, 3/4" x 4 1/2" through 7 3/4" random lengths 3' through 9', average length 6', with T & G sides and squared ends.

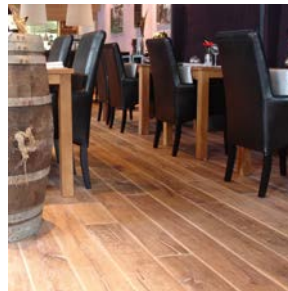
**Engineered Baked** – White Oak, 3/4" x 5 1/2" through 9 3/4" random lengths 3' through 9', average length 6', with T & G sides and squared ends.



### CABIN OAK

Cabin Oak is a European Oak floor with an authentic look, hand crafted to reveal the natural surface of the European Oak lumber. The rolling surface of the boards provides a truly foot-worn appearance, creating an irregular flooring surface with character and charm. Cabin Oak is ideal for use in areas such as boutique shops, restaurants, log cabins, and farmhouses.

**Specifications** – European White oak, 3/4" x 7", random length 2' to 10' with T & G sides and squared ends.



### FRENCH ROAST

The white oak is steamed to mellow the usually white sap wood to a light tan color giving warm and golden brown hues, which is uniform and present throughout the boards meaning that this material can be sanded multiple times and it will never lose its color.

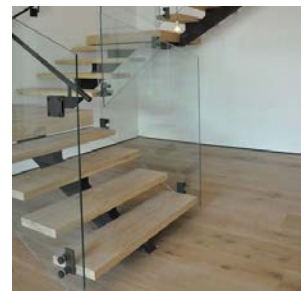
**Specifications** – Solid European White Oak, 3/4" x 4 1/2" through 11", random length, average length 6', with T & G sides and squared ends.

**Engineered French Roast** – 3/4" x 4 1/2" through 11", random length, average length 6', with T & G sides and squared ends.

### MILL RUN

European White Oak exhibits softer color hues, is more dimensionally stable and harder than its American counterpart which adds a different dimension to both natural finished floors as well as what can be achieved with stain. European White Oak represents 'old world' flooring, Long planks, wide widths, and all the natural characteristics of the lumber exhibited throughout each individual plank.

**Specifications** – European White Oak, 3/4" x 5" through 11", random length with T & G sides and squared ends. Available in either a Solid or Engineered Material.





411 Kimberly Road, Hockessin, DE, 19707

Toll Free: 800 823 0898

Tel: 302 239 3800

Fax: 302 239 0491

Email:

Richard Dallett: [richard@boischamois.com](mailto:richard@boischamois.com)

Jim Fleitz: [jfleitz@boischamois.com](mailto:jfleitz@boischamois.com)

Victoria Player: [toryrigg1@aol.com](mailto:toryrigg1@aol.com)

Sales: [sales@boischamois.com](mailto:sales@boischamois.com)

[www.boischamois.com](http://www.boischamois.com)

Handcrafted European Oak hardwood flooring featuring a distinctive old world charm, that lets you step back in time. **Bois Chamois** hardwood flooring is distressed to provide a convincing, naturally worn appearance. Scarring and surface marking is produced without repetition, edges are irregular and worn creating its own unique character that can never be reproduced.

Bois Chamois is renowned for our high quality flooring which are not only found in residential living spaces, but also in restaurants, bars, retail outlets and other large scale commercial projects all over the world. You can always count us for personal attention to orders and questions.

Bois Chamois distinguishes itself not only with its high quality products, but also with service, know-how and advice for our clients. We are happy to advise on installation methods available for a wide variety of site situations. We look forward to being of service to you.

## SUSTAINABLE PRODUCTS

**Bois Chamois** respects our world and our flooring reflects this policy, sustainability starts at the roots, in the forest. We are committed to only working with sustainable forests and also FSC certified materials.

## DEVIATIONS IN COLOR

Sample boards are only an approximation of color and your floor will not match exactly due to variances in sunlight exposure and the natural differences in real wood. Every floor we make is slightly different because of the natural material; the advantage of this is that it guarantees that every floor supplied is truly unique.